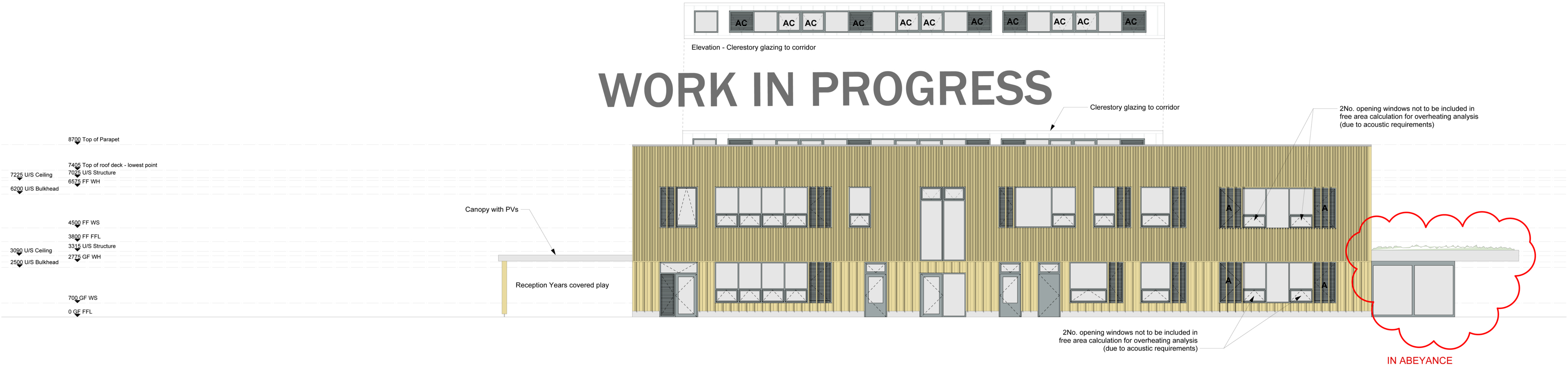


WORK IN PROGRESS



1 NORTH ELEVATION - PHASE 1

WORK IN PROGRESS



2 NORTH ELEVATION - PHASE 2

CHECK THIS DRAWING IS THE LATEST REVISION

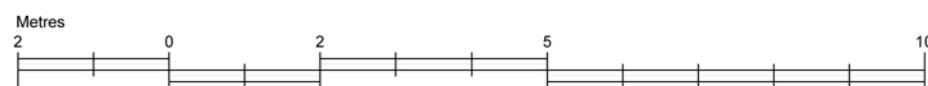
THIS DRAWING SHOULD BE READ IN CONJUNCTION WITH ALL RELEVANT DRAWINGS, SPECIFICATIONS, SCHEDULES AND OTHER CONTRACT INFORMATION ISSUED BY THE ARCHITECT, STRUCTURAL ENGINEER, SERVICES ENGINEER AND ANY OTHER CONSULTANT EMPLOYED OR RETAINED BY THE EMPLOYER IN RESPECT OF THESE WORKS.

ALL DIMENSIONS SHOWN ARE TO THE FACE OF MASONRY, METAL OR TIMBER STUD FRAMING, OR THE CENTRE LINE OF STRUCTURAL OR TIMBER MEMBERS STEEL MEMBERS, UNLESS NOTED OTHERWISE.

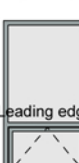
REPORT ANY DISCREPANCIES, CONFLICTS, ERRORS OR OMISSIONS TO THE CA AND SEEK DIRECTIONS BEFORE PROCEEDING.
CONFIRM ALL DIMENSIONS AND LEVELS ON SITE PRIOR TO COMMENCING WORK. IF IN DOUBT ASK!

DO NOT USE ANY AREAS INDICATED FOR EITHER VALUATION, PURCHASE SALE OR ANY OTHER FORM OF LEGALLY BINDING CONTRACT.

DO NOT REPRODUCE ANY PART OF THIS DRAWING WITHOUT PRIOR WRITTEN CONSENT. THIS DRAWING REMAINS THE COPYRIGHT OF ARCHITYPE LTD.



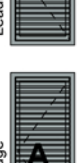
KEY:



Glazing



Ventilation louvre (for secure night-time purging)



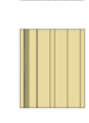
Ventilation louvre with acoustic attenuation (for secure night-time purging)



Timber vertical shading fins over windows - fin depth tbc



Timber cladding with fins at upper level



Timber cladding with fins at lower level



Pre-cast concrete plinth

T

Teleflex

K

Inwards opening key lock windows for cleaning only
NOTE: NOT TO BE INCLUDED IN FREE OPENING AREA CALCULATIONS FOR OVERHEATING ANALYSIS

AC

Actuator

Note:

Any opening windows above 2100mm from FFL to be on 200mm restrictors.

Any opening windows lower than 2100mm from FFL to be on 100mm restrictors.

All windows inwards opening.

Ventilation louvres (for secure-night purging) with inwards opening door - to open to 90 degrees - assume 45% free opening area, excluding 60mm frame all around - tbc by MEP Engineer.

The following U-values (W/m²K) are currently proposed:

- Windows/doors/louvres - 0.8

- Wall/Roof - 0.14

- Floor - 0.15

- Airtightness = <0.6 ACH, to meet Passivhaus standards

Rev A 22/05/15 General changes following revised brief

Revisions

Status

DRAFT

ARCHITYPE

The Morocco Store, 18 Leathermarket Street, London SE1 3JA
T 020 7403 2889 F 020 7407 5283 e london@architype.co.uk www.architype.co.uk

Project HACKBRIDGE PRIMARY SCHOOL

Client LONDON BOROUGH OF SUTTON

Dwg Title PROPOSED ELEVATIONS 1 OF 3

Dwg No. 7960 GA650

Revision A

Scales 1:100 @ A1

Date APRIL 2015

Drawn by BR

Checked by GS