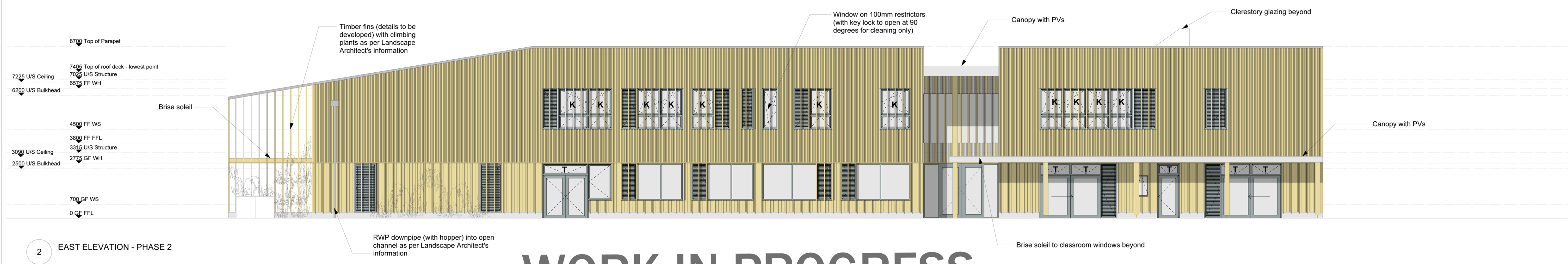


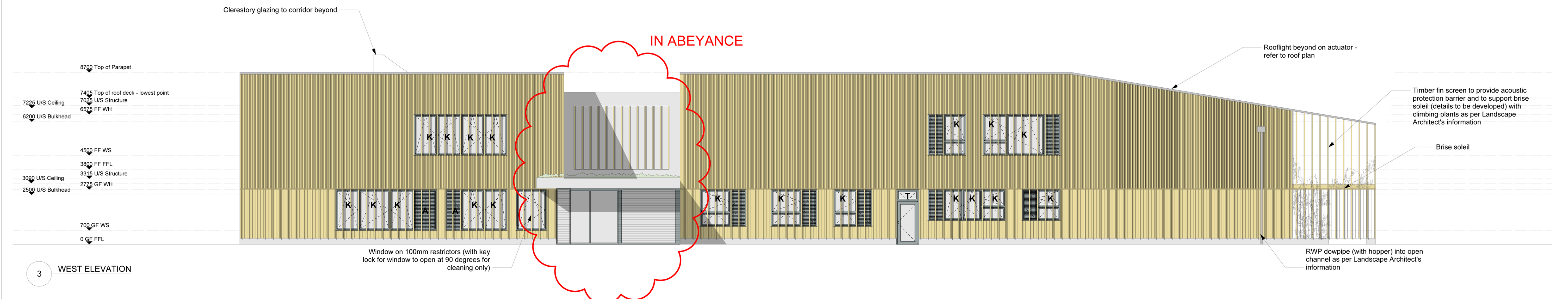
WORK IN PROGRESS



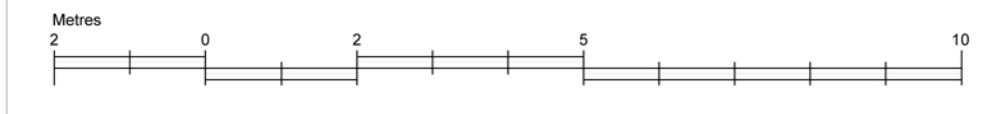
WORK IN PROGRESS



WORK IN PROGRESS



CHECK THIS DRAWING IS THE LATEST REVISION
 THIS DRAWING SHOULD BE READ IN CONJUNCTION WITH ALL RELEVANT DRAWINGS, SPECIFICATIONS, SCHEDULES AND OTHER CONTRACT INFORMATION ISSUED BY THE ARCHITECT, STRUCTURAL ENGINEER, SERVICES ENGINEER AND ANY OTHER CONSULTANT EMPLOYED OR RETAINED BY THE EMPLOYER IN RESPECT OF THESE WORKS.
 ALL DIMENSIONS SHOWN ARE TO THE FACE OF MASONRY, METAL OR TIMBER STUD FRAMING, OR THE CENTRE LINE OF STRUCTURAL OR TIMBER MEMBERS STEEL MEMBERS, UNLESS NOTED OTHERWISE.
 REPORT ANY DISCREPANCIES, CONFLICTS, ERRORS OR OMISSIONS TO THE CA AND SEEK DIRECTIONS BEFORE PROCEEDING.
 CONFIRM ALL DIMENSIONS AND LEVELS ON SITE PRIOR TO COMMENCING WORK. IF IN DOUBT ASK!
 DO NOT USE ANY AREAS INDICATED FOR EITHER VALUATION, PURCHASE SALE OR ANY OTHER FORM OF LEGALLY BINDING CONTRACT.
 DO NOT REPRODUCE ANY PART OF THIS DRAWING WITHOUT PRIOR WRITTEN CONSENT. THIS DRAWING REMAINS THE COPYRIGHT OF ARCHITYPE LTD.



KEY:

- Glazing
- Ventilation louvre (for secure night-time purging)
- Ventilation louvre with acoustic attenuation (for secure night-time purging)
- Timber vertical shading fins over windows - fin depth tbc
- Timber cladding with fins at upper level
- Timber cladding with fins at lower level
- Pre-cast concrete plinth

T Teleflex
 Inwards opening key lock windows for cleaning only
NOTE: NOT TO BE INCLUDED IN FREE OPENING AREA CALCULATIONS FOR OVERHEATING ANALYSIS

K Inwards opening key lock windows for cleaning only
NOTE: NOT TO BE INCLUDED IN FREE OPENING AREA CALCULATIONS FOR OVERHEATING ANALYSIS

AC Actuator

Note:
 Any opening windows above 2100mm from FFL to be on 200mm restrictors.
 Any opening windows lower than 2100mm from FFL to be on 100mm restrictors.
 All windows inwards opening.
 Ventilation louvres (for secure-night purging) with inwards opening door - to open to 90 degrees - assume 45% free opening area, excluding 60mm frame all around - tbc by MEP Engineer.
 The following U-values (W/m2K) are currently proposed:
 - Windows/doors/louvres - 0.8
 - Wall/Roof - 0.14
 - Floor - 0.15
 - Airtightness = <0.6 ACH, to meet Passivhaus standards

Revisions
 Rev A 22/05/15 General changes following revised brief

Status: **DRAFT**

ARCHITYPE
 The Morocco Store, 18 Leathermarket Street, London SE1 3JA
 T 020 7403 2889 F 020 7407 5283 e london@architype.co.uk www.architype.co.uk

Project: HACKBRIDGE PRIMARY SCHOOL
 Client: LONDON BOROUGH OF SUTTON
 Dwg Title: PROPOSED ELEVATIONS 2 OF 3
 Dwg No.: 7960 GA651
 Scales: 1:100 @ A1
 Date: 13/04/15
 Drawn by: BR
 Checked by: GS
 Revision: A