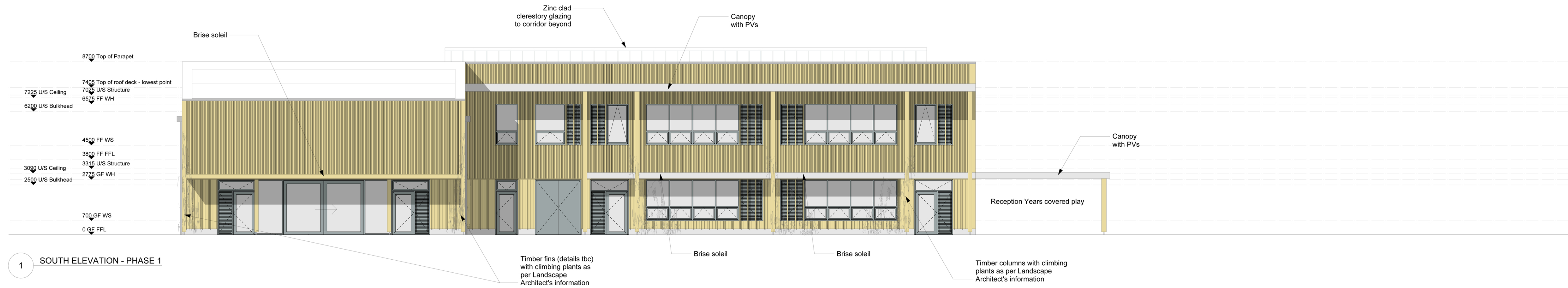
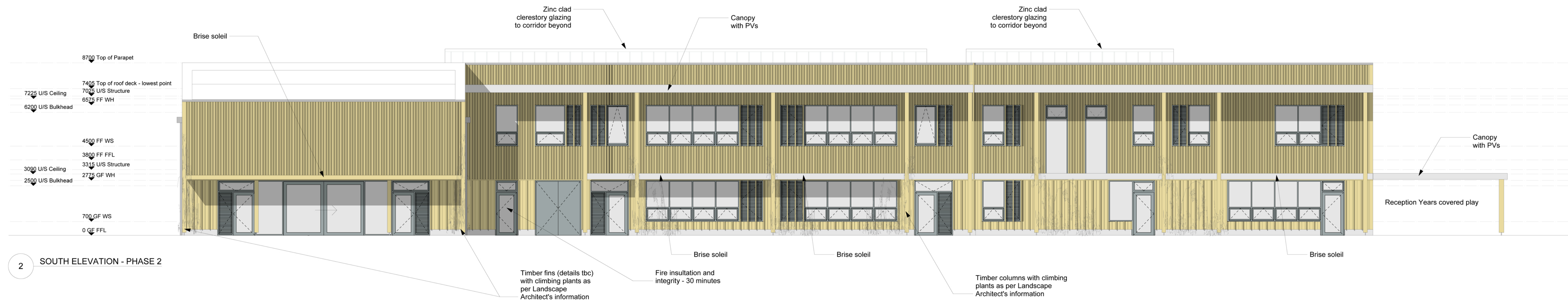


WORK IN PROGRESS



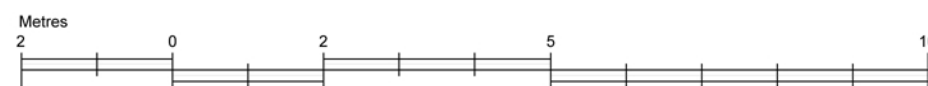
1 SOUTH ELEVATION - PHASE 1

WORK IN PROGRESS



2 SOUTH ELEVATION - PHASE 2

CHECK THIS DRAWING IS THE LATEST REVISION
 THIS DRAWING SHOULD BE READ IN CONJUNCTION WITH ALL RELEVANT DRAWINGS, SPECIFICATIONS, SCHEDULES AND OTHER CONTRACT INFORMATION ISSUED BY THE ARCHITECT, STRUCTURAL ENGINEER, SERVICES ENGINEER AND ANY OTHER CONSULTANT EMPLOYED OR RETAINED BY THE EMPLOYER IN RESPECT OF THESE WORKS.
 ALL DIMENSIONS SHOWN ARE TO THE FACE OF MASONRY, METAL OR TIMBER STUD FRAMING, OR THE CENTRE LINE OF STRUCTURAL OR TIMBER MEMBERS STEEL MEMBERS, UNLESS NOTED OTHERWISE.
 REPORT ANY DISCREPANCIES, CONFLICTS, ERRORS OR OMISSIONS TO THE CA AND SEEK DIRECTIONS BEFORE PROCEEDING.
 CONFIRM ALL DIMENSIONS AND LEVELS ON SITE PRIOR TO COMMENCING WORK. IF IN DOUBT ASK!
 DO NOT USE ANY AREAS INDICATED FOR EITHER VALUATION, PURCHASE SALE OR ANY OTHER FORM OF LEGALLY BINDING CONTRACT.
 DO NOT REPRODUCE ANY PART OF THIS DRAWING WITHOUT PRIOR WRITTEN CONSENT. THIS DRAWING REMAINS THE COPYRIGHT OF ARCHITYPE LTD.



KEY:

	Glazing		Timber vertical shading fins over windows - fin depth tbc
	Ventilation louvre (for secure night-time purging)		Timber cladding with fins at upper level
	Ventilation louvre with acoustic attenuation (for secure night-time purging)		Timber cladding with fins at lower level
			Pre-cast concrete plinth

T	Teleflex
K	Inwards opening key lock windows for cleaning only NOTE: NOT TO BE INCLUDED IN FREE OPENING AREA CALCULATIONS FOR OVERHEATING ANALYSIS
AC	Actuator

Note:
 Any opening windows above 2100mm from FFL to be on 200mm restrictors.
 Any opening windows lower than 2100mm from FFL to be on 100mm restrictors.
 All windows inwards opening.
 Ventilation louvres (for secure-night purging) with inwards opening door - to open to 90 degrees - assume 45% free opening area, excluding 60mm frame all around - tbc by MEP Engineer.
 The following U-values (W/m²K) are currently proposed:
 - Windows/doors/louvres - 0.8
 - Wall/Roof - 0.14
 - Floor - 0.15
 - Airtightness = <0.6 ACH, to meet Passivhaus standards

Status **DRAFT**

ARCHITYPE	
<small>The Morocco Store, 18 Leathermarket Street, London SE1 3JA T 020 7403 2889 F 020 7407 5283 e london@architype.co.uk www.architype.co.uk</small>	
Project HACKBRIDGE PRIMARY SCHOOL	
Client LONDON BOROUGH OF SUTTON	
Dwg Title PROPOSED ELEVATIONS 3 OF 3	
Dwg No. 7960 GA652	Revision
Scales 1:100 @ A1	Date 22/05/15
Drawn by BR	Checked by GS

Revisions